



## THE 1987 VOLKSWAGEN VANAGON



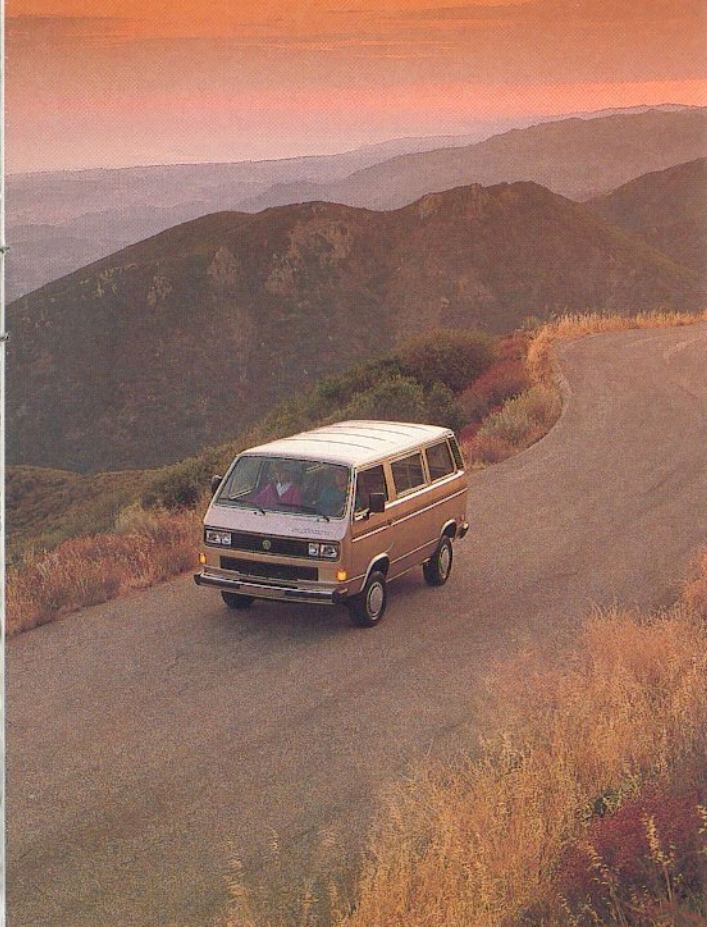




DECADES AGO, VOLKSWAGEN REVOLUTIONIZED THE ENTIRE AUTOMOTIVE INDUSTRY

by creating a new set of driving values which changed forever the way we judge an automobile. This dedication continues to this very day, as our German engineers aspire to design and build products that combine contemporary automotive technology with the classic virtues of durability, reliability and quality. The result is a unique combination of performance and practicality that makes a Volkswagen one of the outstanding automotive values in the world. To prove it to yourself, test drive the 1987 Vanagon. You'll marvel at its excellent driveability. Only then will you fully understand what distinguishes a Volkswagen from every other car on the road. Our confidence in our products has led us to provide a Protection Plan that's as simple and straightforward as a Volkswagen itself. Your new Vanagon is protected by a 2-year unlimited mileage limited warranty on the entire vehicle (except tires). And a 6-year limited warranty is provided against corrosion perforation. A nationwide network of authorized Volkswagen dealers stands ready to provide you with quality parts and service to help make your Volkswagen as pleasurable years down the road as it was the first day you owned it.





Throughout the years, Volkswagen ingenuity has taken many forms, but none more versatile than the Vanagon and Camper. The Vanagon GL offers a spaciousness that makes the mini-vans look truly mini.

The Camper is a one-of-a-kind recreational vehicle that acts as a home away from home. And the Vanagon Syncro 4WD and Camper Syncro 4WD feature automatic four-wheel drive for extraordinary traction on a wide variety of driving surfaces.

Rarely has form followed function with such originality. First-time drivers of the Vanagon GL and Camper GL marvel at their excellent performance and ease of handling. This should come as no surprise since they're powered by a 2.1 liter fuel-injected engine linked to a 4-speed transmission. Their performance is achieved by such standard contemporary engineering features as 4-wheel independent suspension, power rack and pinion steering (optional on Camper) and power front disc brakes. The result is a high degree of agility and nimbleness for a van, without having to sacrifice carrying capacity. Once again, our German engineers have built a vehicle with plenty of room for performance, practicality and value.













One of the hallmarks of our Volkswagen engineers is that they always try to make a good thing even better. In the case of the Vanagon GL Syncro 4WD and Camper Syncro 4WD, their technical brilliance has never shined brighter. By adding an automatic four-wheel drive system, they've added a whole new driving dimension.

The four-wheel drive of the Vanagon GL Syncro 4WD and Camper Syncro 4WD is permanent and automatic. It's always there when you need it, engaging smoothly all by itself whenever it senses a difference in speed between the front and rear axles. The Syncro 4WD improves handling in even the foulest weather. Provides greater directional control during cornering. And prevents excessive tire scrub. To help you get the most from the Syncro 4WD, all models feature an extra low gear for better start-up traction on difficult driving surfaces. Larger tires and higher ground clearance. Plus an 18.4 gallon fuel tank. As a result, the Syncro 4WD adds extra confidence to its already long list of driving pleasures.





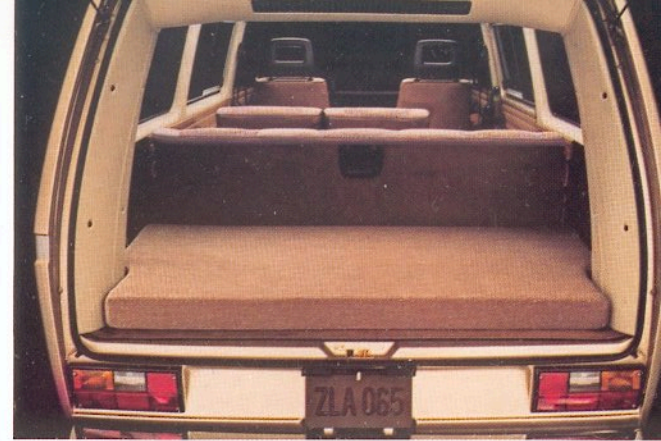
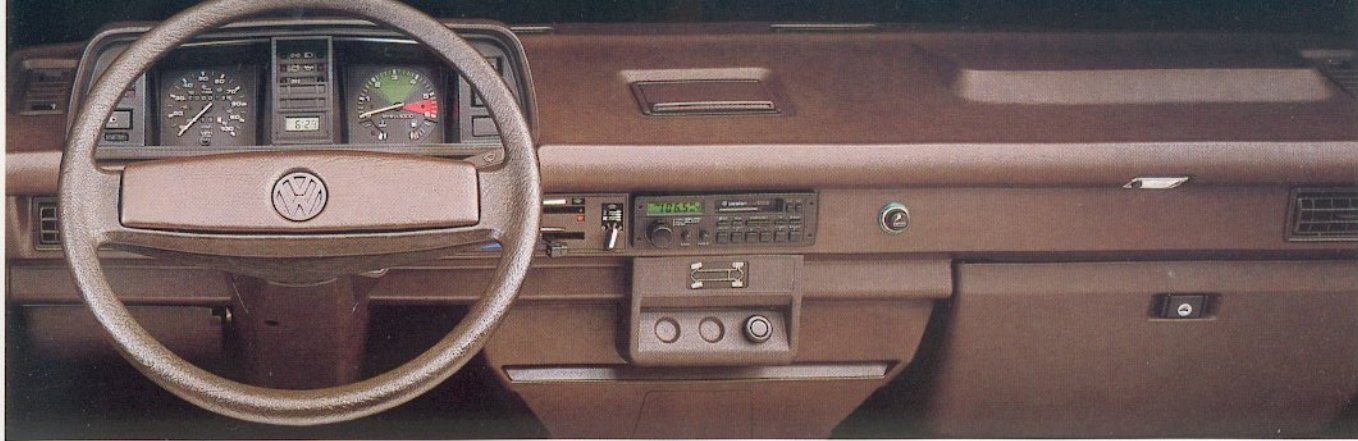




The Camper is the kind of vehicle you'll use all the time. During the week, it acts as a spacious family van. On weekends, it'll take you to camping grounds in the middle of nowhere. But even though you've left home, you don't have to leave the comforts of home. Because the Camper is furnished with a thoughtful array of household amenities. So when you've had enough of the great outdoors, you can come inside and enjoy the luxury of the great indoors.

No matter how far from home, the Camper makes the living easy. It puts at your fingertips a full range of domestic facilities to help make your stay in the wild as civilized as possible. The base Camper provides a unique pop-top roof with a cheerful skylight. Two double-bedded sleeping areas. A rear facing seat behind the driver. A clothes locker and storage cabinets. Folding side table. And removable refrigerator. For even more gracious living, the Camper GL includes a kitchenette complete with sink, stove and refrigerator. And after you've prepared your favorite meal, you can enjoy it in the comfort of the front bucket seats which swivel to face swing-out tables. With the Camper GL, you'll be hard-pressed to think of many other features that'll make you feel more at home.





\*SEE EPA MILEAGE FIGURES ON SPECIFICATIONS PAGE.

The inside of the Vanagon GL is a large living room on wheels. There's more than enough room to transport seven passengers in glorious comfort, together with an impressive 49.7 cubic feet of cargo space. The rear seat folds down to make storage more convenient. And a wide, sliding side door provides easy access. The Vanagon GL offers more carrying capacity than a mini-van, with more efficiency\* than a maxi-van.

You'd never know the Vanagon GL was such a hard-working van from its richly appointed interior. All seating is upholstered in plush velour and features fold-down, adjustable armrests in the front. The two front positions are also deep-contoured bucket seats. A fully padded dash with an illuminated, lockable glovebox adds safety and convenience. While a front and rear heater with a flow-through system will add warmth to those cold winter mornings. To make the task of driving even more pleasant, the Vanagon GL offers such standard convenience features as a rear window defroster. Intermittent wipers. Tinted glass. And see-through front head rests. There are also sliding side windows to let fresh air in, and wall-to-wall picture windows give everyone a clear view out.









Since driving habits are as individual as you are, a complete selection of options and dealer installed accessories is available to help you equip your new Vanagon GL to suit your personal preferences. Optional equipment pictured above includes: a rear window wiper/washer with intermittent feature, power mirrors, alloy wheels, power windows, sunroof (N/A on Camper models), AM/FM cassette stereo radio with anti-theft feature and Syncro rear differential lock knob

## OPTIONS

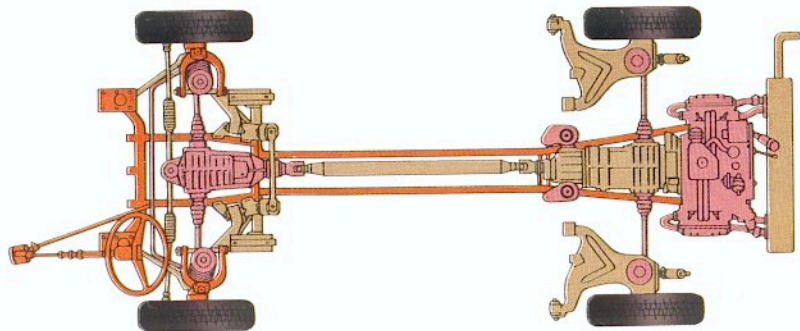
O=OPTIONAL —=NOT AVAILABLE

|  | VANAGON GL/<br>GL SYNCRO | CAMPER/<br>CAMPER<br>SYNCRO | GL CAMPER/<br>GL CAMPER<br>SYNCRO |
|--|--------------------------|-----------------------------|-----------------------------------|
| AUTOMATIC TRANSMISSION (N/A ON SYNCRO)                                   | O                        | O                           | O                                 |
| AIR CONDITIONING   | O                        | O                           | O                                 |
| AM/FM CASSETTE RADIO<br>WITH ANTI-THEFT FEATURE                          | O                        | O                           | O                                 |
| REAR WIPER WITH INTERMITTENT FEATURE                                     | O                        | O                           | O                                 |
| POWER STEERING   | S                        | O                           | S                                 |
| SUNROOF (N/A WITH AIR CONDITIONING)                                      | O                        | —                           | —                                 |
| POWER MIRRORS; WINDOWS; LOCKS  | O                        | O                           | O                                 |
| CRUISE CONTROL   | O                        | O                           | O                                 |
| ALLOY WHEELS<br>(6J x 14 WITH 205/70 R14 TIRES)                          | O                        | O                           | O                                 |
| LOCKING REAR DIFFERENTIAL (SYNCRO ONLY)                                  | O                        | O                           | O                                 |
| WEEKENDER PACKAGE: FOLDING BED,<br>ENGINE COMPARTMENT CUSHION—CLOTH ONLY | O                        | —                           | —                                 |





Normally the rear wheels are the driving force of the vehicle. On a Syncro 4WD, if these wheels begin to lose traction, a special device that acts like an automatically locking differential begins to transmit power to the front wheels. Since the four-wheel drive is constantly in action, the amount of power to the front wheels is determined by particular driving conditions.





S=STANDARD O=OPTIONAL —=NOT AVAILABLE GL SYNCRO CAMPER SYNCRO GL CAMPER SYNCRO

## MECHANICAL

|   |   |   |   |
|---|---|---|---|
| 2.1 LITER WATER-COOLED FUEL INJECTED ENGINE               | S | S | S |
| 4-SPEED MANUAL TRANSMISSION                               | S | S | S |
| EXTRA LOW GEAR (SYNCRO MODELS ONLY)                       | S | S | S |
| AUTOMATICALLY ENGAGING 4-WHEEL DRIVE (SYNCRO MODELS ONLY) | S | S | S |
| ELECTRONIC BREAKERLESS IGNITION                           | S | S | S |
| INDEPENDENT FRONT AND REAR SUSPENSION                     | S | S | S |
| POWER ASSISTED BRAKES (FRONT DISCS/REAR DRUMS)            | S | S | S |
| POWER RACK AND PINION STEERING                            | S | O | S |
| DYNAMIC OIL PRESSURE SYSTEM                               | S | S | S |
| STEEL BELTED RADIAL TIRES                                 | S | S | S |
| THERMOSTATICALLY CONTROLLED 2-SPEED ELECTRIC RADIATOR FAN | S | S | S |

## EXTERIOR

|   |   |   |   |
|---|---|---|---|
| DUAL OUTSIDE MIRRORS (CONVEX ON PASSENGER SIDE)           | S | S | S |
| SLIDING SIDE DOOR; SLIDING SIDE WINDOWS                   | S | S | S |
| TINTED GLASS; ELECTRIC REAR WINDOW DEFOGGER               | S | S | S |
| INTERMITTENT WIPERS                                       | S | S | S |
| POP-TOP ROOF WITH DOUBLE BED AND CARGO CARRIER            | — | S | S |
| WATER TANK, CITY WATER HOOKUP, 110-VOLT ELECTRICAL HOOKUP | — | — | S |
| AERO WHEEL COVERS   | S | S | S |

## INTERIOR

|   |   |   |   |
|---|---|---|---|
| PADDED INSTRUMENT PANEL WITH FULL INSTRUMENTATION INCLUDING SPEEDOMETER, TRIP ODOMETER, ILLUMINATED GLOVE BOX, MAP LIGHT AND SHELF  | S | S | S |
| DELUXE SEATS IN VELOUR UPHOLSTERY WITH FOLD DOWN ADJUSTABLE ARMRESTS  | S | — | S |
| TWEED CLOTH UPHOLSTERY  | — | S | — |
| FOLD DOWN REAR BENCH SEAT, CONVERTS TO BED  | O | S | S |
| FULL CARPETING  | S | S | S |
| TACHOMETER AND DIGITAL CLOCK  | S | — | S |
| ILLUMINATED VANITY MIRROR   | S | — | S |
| ILLUMINATED/LOCKABLE GLOVE BOX  | S | S | S |
| CLOTH INLAIS IN DOOR PANELS   | S | S | S |
| CLOTHES LOCKER/3-DOOR CLOSET, OVERHEAD STORAGE CABINET, FLUORESCENT INTERIOR LIGHT, PRIVACY CURTAINS, REMOVABLE SCREEN FOR HATCH DOOR, SKYLIGHT   | — | S | S |
| REMOVABLE CARPET, GAS 110/12-VOLT REFRIGERATOR, STORE-AWAY TABLES, FRONT SWIVEL SEATS, 2-SEATER FOLDING BENCH SEAT, 110-VOLT ELECTRICAL OUTLET, CIRCUIT BREAKER, ELECTRICAL CABLE, LP GAS STOVE/TANK, FIRE EXTINGUISHER | — | — | S |
| SECOND 12-VOLT BATTERY, CUSHIONED SEAT BEHIND DRIVER'S SEAT, REMOVABLE 110/12-VOLT REFRIGERATOR, FOLDING SIDE TABLE, 3-SEATER FOLDING BENCH SEAT, 3 CUP HOLDERS   | — | S | — |

|                            |   |
|----------------------------|---|
| ENGINE TYPE                | 4-CYLINDER, HORIZONTALLY OPPOSED FUEL-INJECTION   |
| DISPLACEMENT               | 2.1 LITER, 129 CU. IN.  |
| HORSEPOWER @ RPM (SAE NET) | 95 @ 4,800  |
| TORQUE @ RPM               | 117.3 FT. LBS. @ 3,200  |
| BODY/FRAME CONSTRUCTION    | UNITIZED CONSTRUCTION   |
| FRONT SUSPENSION           | INDEPENDENT WITH UPPER AND LOWER CONTROL ARMS, COIL SPRINGS, TELESCOPIC SHOCK ABSORBERS   |
| REAR SUSPENSION            | INDEPENDENT WITH SEMI-TRAILING ARMS, COIL SPRINGS, TELESCOPIC SHOCK ABSORBERS   |
| STEERING TYPE              | RACK AND PINION   |
| TURNING CIRCLE             | 35.1 FT. (35.8 FT. WITH POWER STEERING)   |
| BRAKES                     | DUAL HYDRAULIC SYSTEM WITH POWER ASSIST. 10.9" FRONT DISCS, 9.9" REAR DRUMS. INERTIA CONTROLLED PRESSURE REGULATOR. MECHANICAL PARKING BRAKE. |

## DIMENSIONS

|                |                        |                  |                                     |
|----------------|------------------------|------------------|-------------------------------------|
| WHEELBASE      | 96.9"                  | OVERALL WIDTH    | 72.6"                               |
| FRONT TRACK    | 96.6" SYNCRO<br>62.4"  | OVERALL HEIGHT   | 77.2"                               |
| REAR TRACK     | 61.7" SYNCRO<br>61.8"  | CAMPER HEIGHT    | 78.3" SYNCRO<br>80.9"               |
| OVERALL LENGTH | 61.4" SYNCRO<br>179.9" | GROUND CLEARANCE | 82.1" SYNCRO<br>7.5"<br>8.3" SYNCRO |

## CAPACITIES

|                    |   |
|--------------------|---|
| CARGO CAPACITY     | 49.7 CU. FT. (REAR SEAT UP)<br>92.9 CU. FT. (REAR SEAT DOWN)<br>201.0 CU. FT. (REAR SEAT DOWN, CENTER SEAT REMOVED) |
| SEATING CAPACITY   | VANAGON 7, CAMPER 4 OR 6  |
| FUEL TANK CAPACITY | 15.9 U.S. GALLONS (18.4 U.S. GALLONS ON SYNCRO)   |

## WHEELS AND TIRES

|              |                                |
|--------------|--------------------------------|
| STEEL WHEELS | 5 1/2J x 14                    |
| RADIAL TIRES | 185R14C6PR (205/70 R14 SYNCRO) |

## EPA MILEAGE ESTIMATES\*

|                            | CITY | 50 STATES | HIGHWAY |
|----------------------------|------|-----------|---------|
| VANAGON/CAMPER W/4-SPEED   | 16   |           | 18      |
| VANAGON/CAMPER W/AUTOMATIC | 14   |           | 16      |
| VANAGON/CAMPER SYNCRO      | 15   |           | 15      |

## EXTERIOR COLORS

|         |   |   |
|---------|---|---|
| VANAGON | PASTEL WHITE<br>SAVANNAH BEIGE METALLIC<br>FLASH SILVER METALLIC<br>TITIAN RED METALLIC | MOCCA BROWN<br>MARINE BLUE<br>DOVE BLUE METALLIC<br>WOLFRAM GREY METALLIC |
|---------|---|---|

NOT ALL COLORS ARE AVAILABLE ON ALL MODELS.  
SEE YOUR VOLKSWAGEN DEALER FOR COLOR AND TRIM SELECTIONS.

\*REMEMBER: USE THE EPA ESTIMATED MILEAGE FOR COMPARISON TO OTHERS. YOUR ACTUAL MILEAGE MAY VARY DEPENDING ON SPEED, TRIP LENGTH AND WEATHER. VOLKSWAGEN UNITED STATES, INC. BELIEVES THE SPECIFICATIONS IN THIS BROCHURE TO BE CORRECT AT TIME OF PRINTING. HOWEVER, SPECIFICATIONS, STANDARD EQUIPMENT AND OPTIONS ARE SUBJECT TO CHANGE WITHOUT NOTICE. SOME OPTIONS MAY BE UNAVAILABLE WHEN YOUR VEHICLE IS BUILT. PLEASE ASK YOUR DEALER FOR ADVICE CONCERNING CURRENT AVAILABILITY OF OPTIONS AND VERIFY THAT YOUR VEHICLE INCLUDES THE OPTIONAL EQUIPMENT YOU ORDERED. TIRES ARE SUPPLIED BY VARIOUS MANUFACTURERS. FOX, GOLF, GTI, JETTA, SCIROCCO, QUANTUM, VANAGON AND VOLKSWAGEN ARE REGISTERED TRADEMARKS OF VOLKSWAGEN AG.  
FORM NO. W64 257 6011 LITHO IN U.S.A. SEATBELTS SAVE LIVES.





FOX • GOLF GL • JETTA • GTI • CABRIOLET • SCIROCCO • QUANTUM • VANAGON

